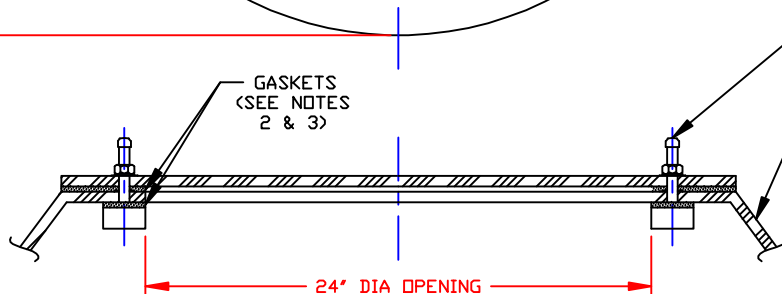
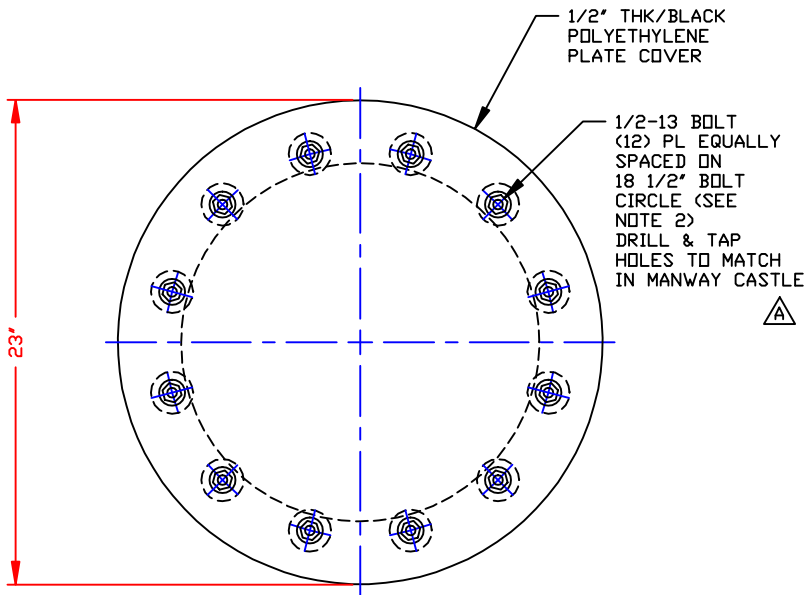
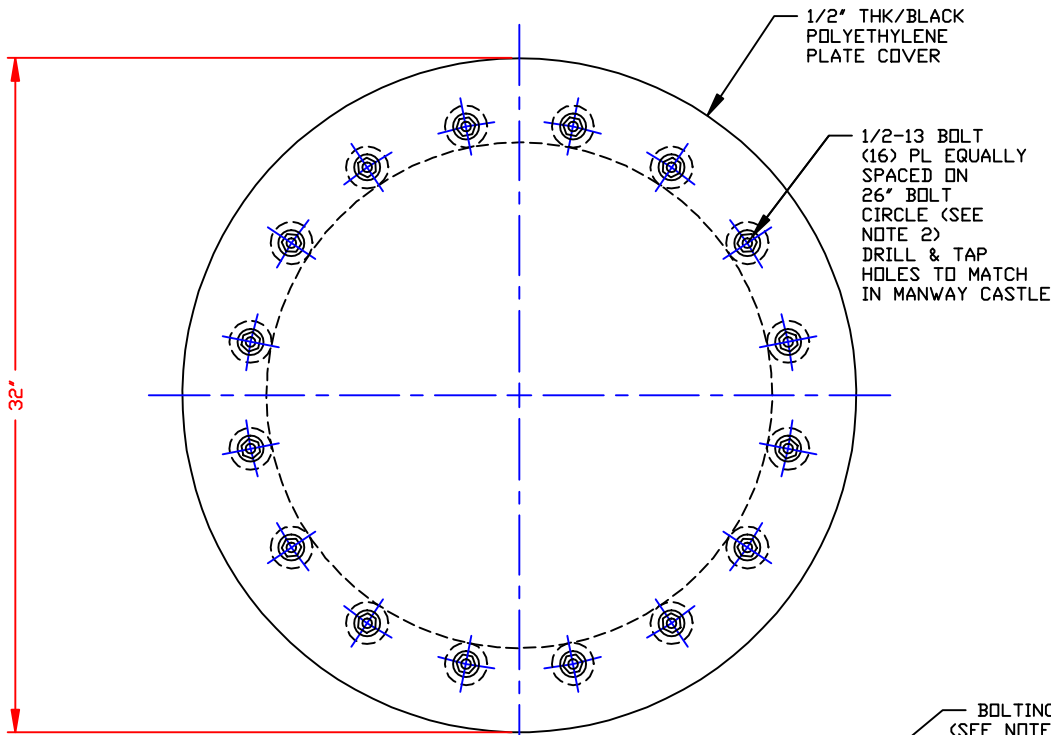
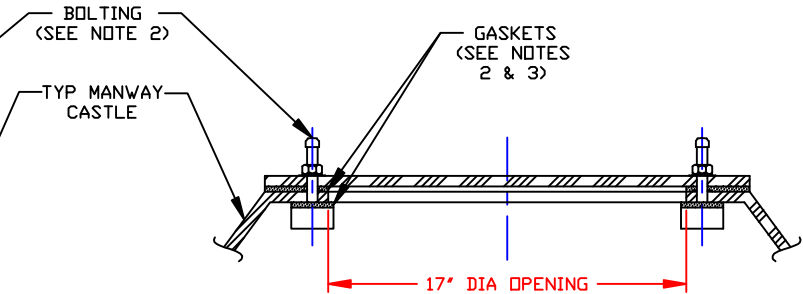


<p>NON-CONTROLLED COPY</p> <p>INFORMATION SUBJECT TO CHANGE WITHOUT NOTICE</p> <p>COPY WILL <u>NOT</u> BE UPDATED</p>	<p>COPY ISSUED BY.....</p> <p>COPY ISSUED ON.....</p>
-----------------------------------------------------------------------------------------------------------------------	-------------------------------------------------------



24" MANWAY DETAIL



17" MANWAY DETAIL

- NOTES**
1. THIS IS A COMPUTER GENERATED DWG. DO NOT REVISE BY HAND.
 2. BOLTING TO BE 1/2-13 X 3 1/4" LG ALL TH'D STUD W/PE ENCAPSULATED HEAD W/FLAT WASHER, LOCK WASHER & 1/2-13 NUT/316SS, ALLOY C-276, TITANIUM, OR ALLOY 400 W/STUD BOLT GSKT/3/8" THK PE FOAM OR EPDM SPONGE; 1/4" THK EPDM, VITON OR BUNA-N.
 3. COVER GSKTS TO BE 23" OD X 17" ID FOR 17" MANWAY, 32" OD X 24" ID FOR 24" MANWAY. GSKT MAT'L TO BE 3/8" THK PE FOAM OR EPDM SPONGE; 1/4" THK EPDM, VITON OR BUNA-N.

REV "A" REVISED NOTE BY:JB 1/29/09 CK:WM

<p>DWG TITLE</p> <p>17" & 24" FUME TIGHT MANWAY COVERS</p>		<p>DR: MB WILKERSON</p>
<p>SCALE: 2"=1'-0"</p>	<p>POLY PROCESSING Company</p>	<p>CK: J. BRANTLEY</p>
<p>DATE: 10/11/00</p>		<p>SHEET 1 OF 1</p>
<p>Computer Region P.O. Box 4150 07210 8201 Old Springton Rd Norcross, GA 30071 CEN 343-7560 FAX 343-4795</p>		<p>COMPUTER FILE 17-24FTMWY</p>
<p>REV</p>		<p>A</p>