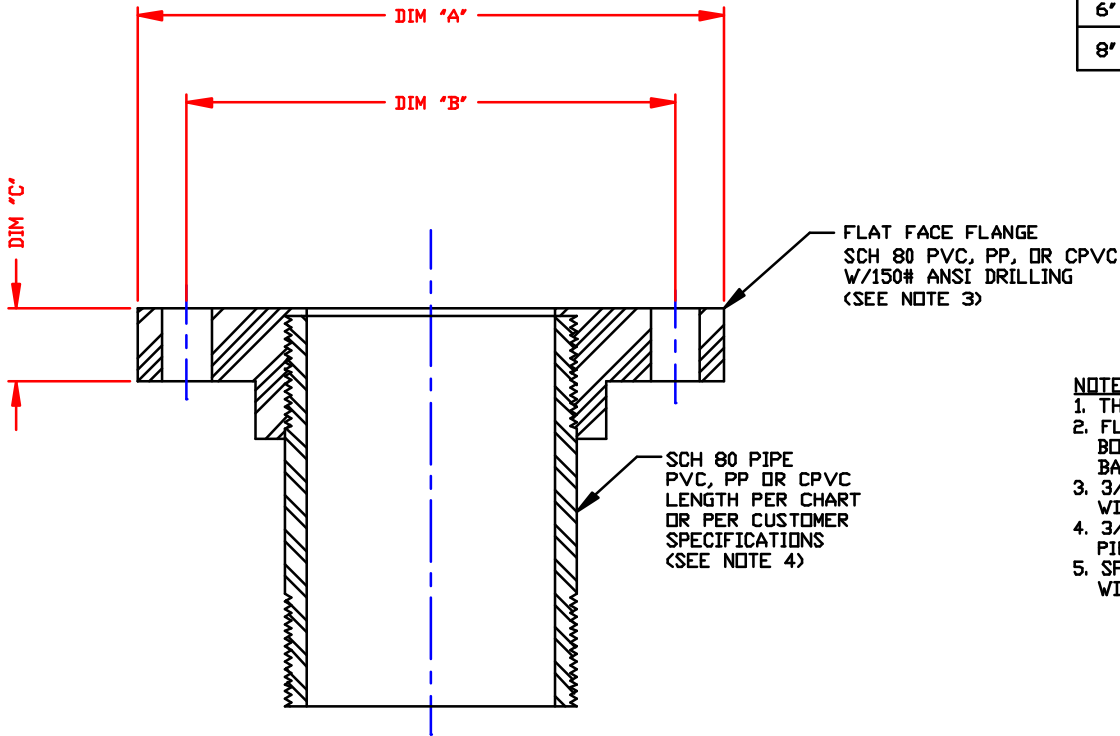


NON-CONTROLLED COPY
 INFORMATION SUBJECT TO CHANGE WITHOUT NOTICE
 COPY WILL NOT BE UPDATED

COPY ISSUED BY.....
 COPY ISSUED ON.....

PIPE SIZE	DIM 'A'	DIM 'B'	DIM 'C'	DIA BOLT HOLES	NO. BOLT HOLES	PIPE LENGTH
3/4"	3 7/8"	2 3/4"	1/2"	1/2"	4	4
1"	4 1/4"	3 1/8"	5/8"	1/2"	4	4
1 1/2"	5"	3 7/8"	11/16"	1/2"	4	4
2"	6"	4 3/4"	3/4"	5/8"	4	4
3"	7 1/2"	6"	15/16"	5/8"	8	4"
4"	9"	7 1/2"	1 1/8"	5/8"	8	6"
6"	11"	9 1/2"	1 1/4"	3/4"	8	8
8"	13 1/2"	11 3/4"	1 7/16"	3/4"	8	12"



- NOTES**
1. THIS IS A COMPUTER GENERATED DWG. DO NOT REVISE BY HAND.
 2. FLANGE ADAPTERS MAY BE THREADED INTO BULKHEAD FTGS, BOLTED FLANGE FTGS, FEMALE SS BULKHEAD FTGS OR UNIVERSAL BALL DOME FTGS.
 3. 3/4" THRU 4" FLANGES WILL BE THREADED/6" & 8" FLANGES WILL BE SOCKET FLANGES, UNLESS SPECIFIED OTHERWISE.
 4. 3/4" THRU 4" PIPE WILL BE THREADED BOTH ENDS/6" & 8" PIPE WILL BE STRAIGHT PIPE, UNLESS SPECIFIED OTHERWISE.
 5. SPECIAL SS FLANGE ADAPTERS CAN BE ORDERED. ALL SIZES WILL BE THREADED.

CONFIDENTIAL PROPERTY OF
 POLY PROCESSING COMPANY
 NOT FOR REPRINT OR USE
 WITHOUT PERMISSION

DWG TITLE		FLANGE ADAPTER	
SCALE:	6"=1'-0"		<small>Control Number</small> <small>PLS. SEE CHART</small> <small>FOR THE FLANGE NO.</small> <small>FOR THE PIPE NO.</small> <small>FOR THE PIPE SIZE</small> <small>FOR THE PIPE WALL THICKNESS</small> <small>FOR THE PIPE SCHEDULE</small> <small>FOR THE PIPE END FINISH</small> <small>FOR THE PIPE END DRILLING</small> <small>FOR THE PIPE END TOLERANCES</small> <small>FOR THE PIPE END FINISH</small> <small>FOR THE PIPE END DRILLING</small> <small>FOR THE PIPE END TOLERANCES</small>
DATE:	9/19/00		<small>DR:</small> MB WILKERSON <small>CK:</small> J. BRANTLEY
		SHEET	COMPUTER FILE
		1 OF 1	FLGADPT -