

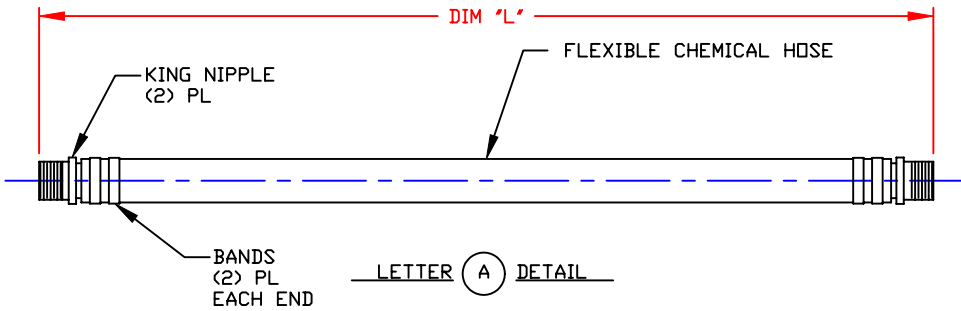
NON-CONTROLLED COPY

INFORMATION SUBJECT TO CHANGE WITHOUT NOTICE

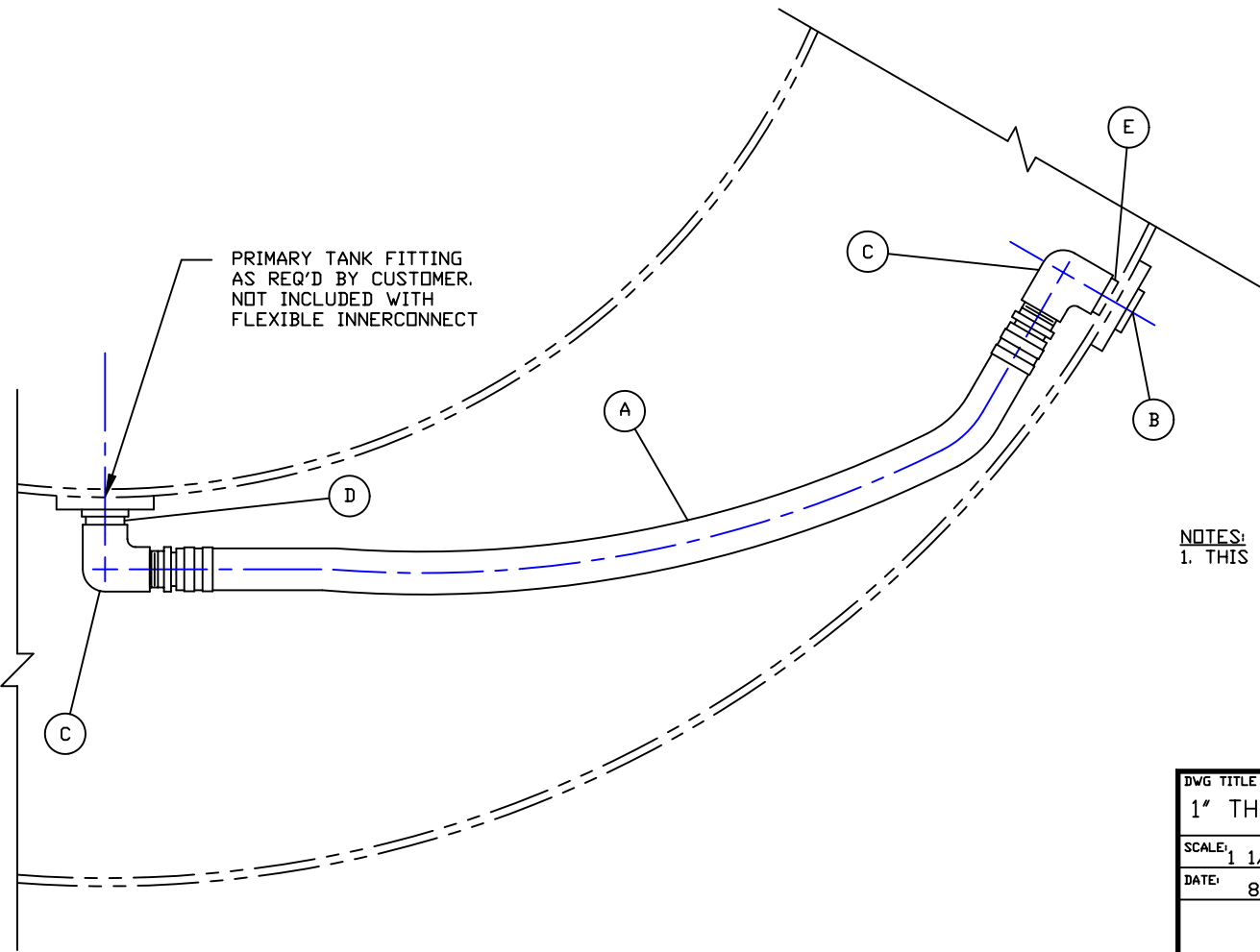
COPY WILL NOT BE UPDATED

COPY ISSUED BY \_\_\_\_\_

COPY ISSUED ON \_\_\_\_\_



| BILL OF MATERIAL                   |     |     |  |                |        |      |      |
|------------------------------------|-----|-----|--|----------------|--------|------|------|
| PVC FLEXIBLE INNERCONNECT ASSEMBLY |     |     |  | PPC STOCK NOS. |        |      |      |
| ITEM                               | QTY | "L" | DESCRIPTION                            | 1"             | 1 1/2" | 2"   | 3"   |
| --                                 | 1   | 24" | FLEXIBLE INNERCONNECT, UHMWPE/PVC      | 6833           | 6836   | 6839 | 6842 |
| --                                 | 1   | 30" | FLEXIBLE INNERCONNECT, UHMWPE/PVC      | 6834           | 6837   | 6840 | 6843 |
| --                                 | 1   | 48" | FLEXIBLE INNERCONNECT, UHMWPE/PVC      | 6835           | 6838   | 6841 | 6844 |
| FLEXIBLE INNERCONNECT COMPONENTS   |     |     |  | 1"             | 1 1/2" | 2"   | 3"   |
| A                                  | 1   | 24" | HOSE W/MNPT, UHMWPE W/PVC KING NIPPLES | 6809           | 6812   | 6815 | 6818 |
| A                                  | 1   | 30" | HOSE W/MNPT, UHMWPE W/PVC KING NIPPLES | 6810           | 6813   | 6816 | 6819 |
| A                                  | 1   | 48" | HOSE W/MNPT, UHMWPE W/PVC KING NIPPLES | 6811           | 6814   | 6817 | 6820 |
| B                                  | 1   | --  | BULKHEAD FITTING/S X T/PVC             | 2655           | 2656   | 2657 | 2658 |
| C                                  | 2   | --  | 90° ELL/T X T/PVC 80                   | 4612           | 4602   | 4623 | 4633 |
| D                                  | 1   | --  | SHORT NIPPLE/PVC 80                    | 4820           | 4811   | 4844 | 4851 |
| E                                  | 1   | --  | T.O.E. NIPPLE/PVC 80                   | 4817           | 4804   | 4832 | 4846 |



NOTES:  
1. THIS IS A COMPUTER GENERATED DWG. DO NOT REVISE BY HAND.

CONFIDENTIAL PROPERTY OF  
POLY PROCESSING COMPANY  
NOT FOR REPRINT OR USE  
WITHOUT PERMISSION

|   |              |               |                  |
|---|--------------|---------------|------------------|
| DWG TITLE                                     |              |               |                  |
| 1" THRU 3" FLEXIBLE INNERCONNECT ASSEMBLY/PVC |              |               |                  |
| SCALE:  | 1 1/2"=1'-0" |               | DR: MB WILKERSON |
| DATE:   | 8/02/01      |               | CK: J. BRANTLEY  |
| SHEET   |              | COMPUTER FILE | REV              |
| 1 OF 1  |              | FLXINTPVC     | -                |

Central Region  
P.O. Box 4150 (71211)  
2501 Old Stearnington Rd  
Hercules, LA 71220  
CIBD 343-7565  
FAX (504) 343-9795