

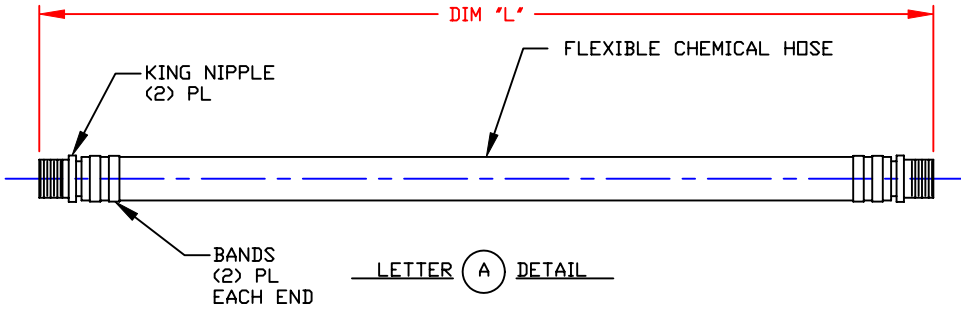
NON-CONTROLLED COPY

INFORMATION SUBJECT TO CHANGE WITHOUT NOTICE

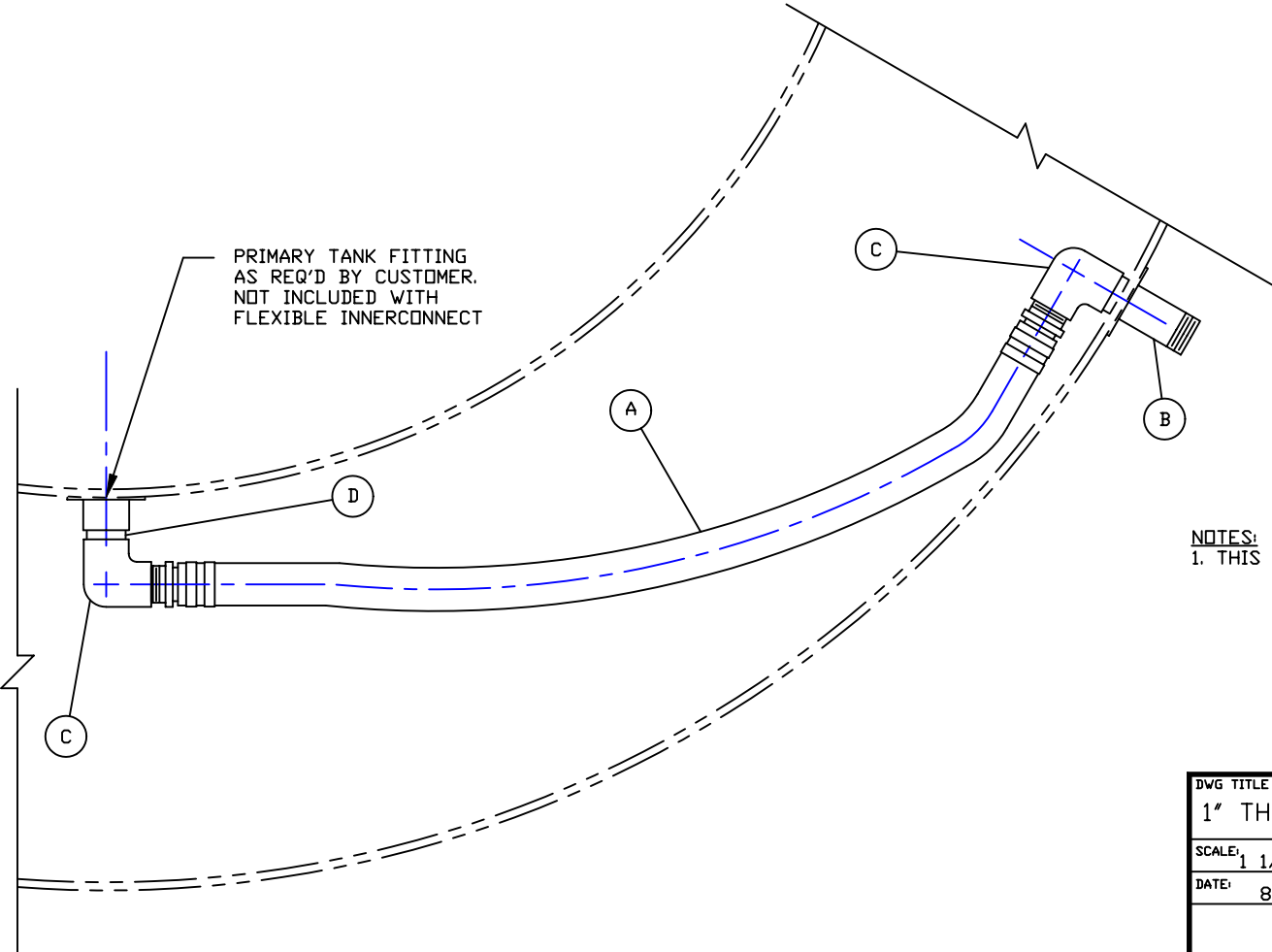
COPY WILL NOT BE UPDATED

COPY ISSUED BY _____

COPY ISSUED ON _____



| BILL OF MATERIAL | | | | | | | |
|------------------------------------|-----|-----|---------------------------------------|----------------|--------|------|------|
| PVC FLEXIBLE INNERCONNECT ASSEMBLY | | | | PPC STOCK NOS. | | | |
| ITEM | QTY | "L" | DESCRIPTION | 1" | 1 1/2" | 2" | 3" |
| -- | 1 | 24" | FLEXIBLE INNERCONNECT, UHMWPE/SS | 6845 | 6848 | 6851 | 6854 |
| -- | 1 | 30" | FLEXIBLE INNERCONNECT, UHMWPE/SS | 6846 | 6849 | 6852 | 6855 |
| -- | 1 | 48" | FLEXIBLE INNERCONNECT, UHMWPE/SS | 6847 | 6850 | 6853 | 6856 |
| FLEXIBLE INNERCONNECT COMPONENTS | | | | 1" | 1 1/2" | 2" | 3" |
| A | 1 | 24" | HOSE W/MNPT, UHMWPE W/SS KING NIPPLES | 6821 | 6824 | 6827 | 6830 |
| A | 1 | 30" | HOSE W/MNPT, UHMWPE W/SS KING NIPPLES | 6822 | 6825 | 6828 | 6831 |
| A | 1 | 48" | HOSE W/MNPT, UHMWPE W/SS KING NIPPLES | 6823 | 6826 | 6829 | 6832 |
| B | 1 | -- | FULL MALE BULKHEAD FITTING/PPC SS316 | 3056 | 3060 | 3064 | 3068 |
| C | 2 | -- | 90° ELL/T X T/SS 316 | 4611 | 4604 | 4624 | 6859 |
| D | 1 | -- | SHORT NIPPLE/SS 316 | 4822 | 6857 | 4842 | 6858 |



NOTES:
1. THIS IS A COMPUTER GENERATED DWG. DO NOT REVISE BY HAND.

CONFIDENTIAL PROPERTY OF
POLY PROCESSING COMPANY
NOT FOR REPRINT OR USE
WITHOUT PERMISSION

| | | | |
|--|--------------|---------------|------------------|
| DWG TITLE | | | |
| 1" THRU 3" FLEXIBLE INNERCONNECT ASSEMBLY/SS | | | |
| SCALE: | 1 1/2"=1'-0" | | DR: MB WILKERSON |
| DATE: | 8/02/01 | | CK: J. BRANTLEY |
| SHEET | | COMPUTER FILE | REV |
| 1 OF 1 | | FLXINTSS | - |