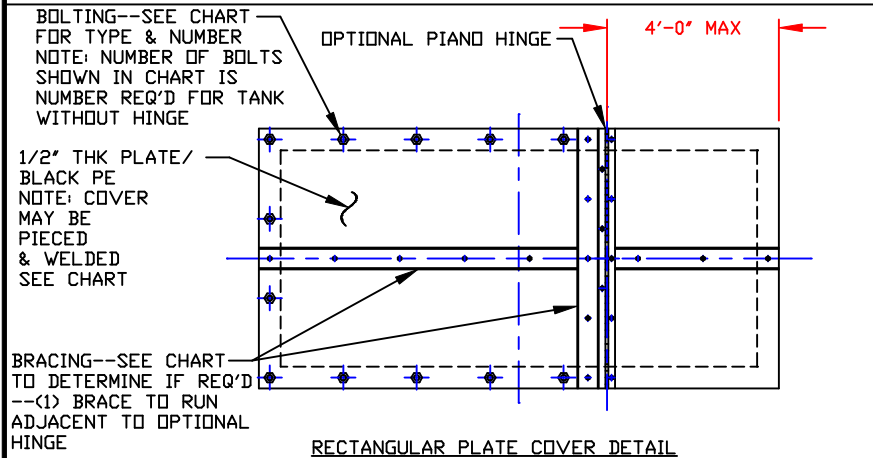
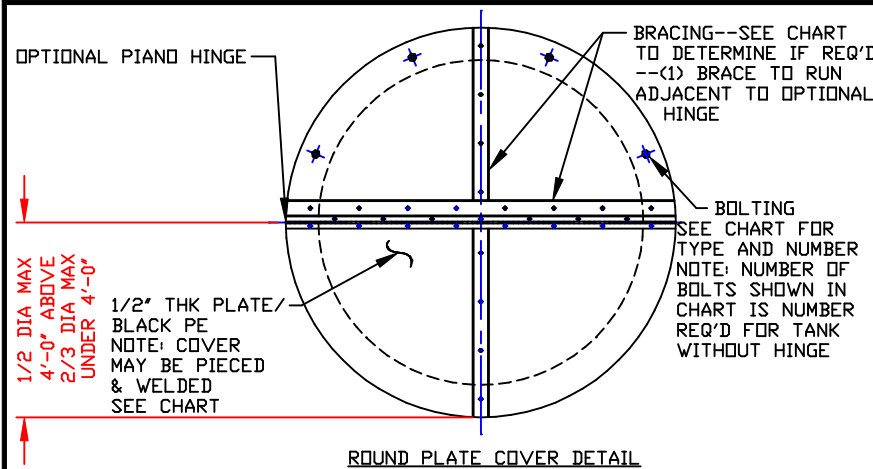


NON-CONTROLLED COPY
 INFORMATION SUBJECT TO CHANGE WITHOUT NOTICE
 COPY WILL NOT BE UPDATED

COPY ISSUED BY _____
 COPY ISSUED ON _____



TANK STOCK NO.	TANK	COVER DIM	BOLT PATTERN	NO. BOLTS	*TYPE BOLTS	WLD	BRACE **
71500055	55 GAL OPEN TOP ***	30" DIA	27 1/2" BC	8	SS	NO	NO
74300055	55 GAL OPEN TOP 20° CONE	21" DIA	21" BC	4	PE	NO	NO
45100080	80 GAL RECT OPEN TOP	35" X 29"	33" X 27"	8	SS	NO	NO
41500110	110 GAL OPEN TOP ***	30" DIA	27 1/2" BC	8	SS	NO	NO
74300100	100 GAL OPEN TOP 20° CONE	32" DIA	29" BC	4	PE	NO	NO
41500160	160 GAL OPEN TOP ***	36" DIA	33 3/4" BC	8	SS	NO	NO
45100165	165 GAL RECT OPEN TOP	39" X 39"	38" X 38"	8	SS	NO	(1) PL
71500155	155 GAL OPEN TOP	37" DIA	34" BC	8	PE	NO	NO
41500220	220 GAL OPEN TOP ***	36" DIA	33 3/4" BC	8	SS	NO	NO
74300250	250 GAL OPEN TOP 20° CONE	42" DIA	39" BC	8	PE	NO	(1) PL
45100265	265 GAL RECT	53" X 50 1/2"	50 1/2" X 48"	12	SS	YES	(1) PL
41500330	330 GAL OPEN TOP ***	51" DIA	47 1/2" BC	8	SS	YES	(1) PL
71500360	360 GAL OPEN TOP	48" DIA	45" BC	8	PE	NO	(1) PL
45100385	385 GAL RECT OPEN TOP	70" X 47"	68" X 45"	14	SS	NO	(1) PL
41500470	470 GAL OPEN TOP ***	51" DIA	48 1/2" BC	8	SS	YES	(1) PL
71500505	505 GAL OPEN TOP	48" DIA	45" BC	8	PE	NO	(1) PL
71500575	575 GAL OPEN TOP	48" DIA	44" BC	8	PE	NO	(1) PL
71500570	570 GAL OVERFLOW BASIN	82" DIA	80" BC	16	SS	YES	(2) PL
45100635	635 GAL OPEN TOP RECT	45" X 117"	42" X 115"	16	SS	YES	(2) PL
45100645	645 GAL RECT	48" X 48"	46" X 46"	8	SS	NO	(1) PL
71500700	700 GAL OPEN TOP	61" DIA	58" BC	12	PE	YES	(1) PL
71500935	935 GAL CYL OVERFLOW BASIN	83" DIA	81 1/2" BC	16	SS	YES	(2) PL
71500960	960 GAL OPEN TOP	64" DIA	60" BC	8	PE	YES	(1) PL
71501100	1100 GAL OPEN TOP	61" DIA	58" BC	12	PE	YES	(1) PL
45101150	1150 GAL RECT	59 1/2" X 68 1/2"	59 1/2" X 68 1/2"	14	SS	YES	(1) PL
45101500	1500 GAL RECT	79" X 67"	79" X 67"	14	SS	YES	(1) PL
41502000	2000 OPEN TOP	92" DIA	89" BC	16	PE	YES	(2) PL

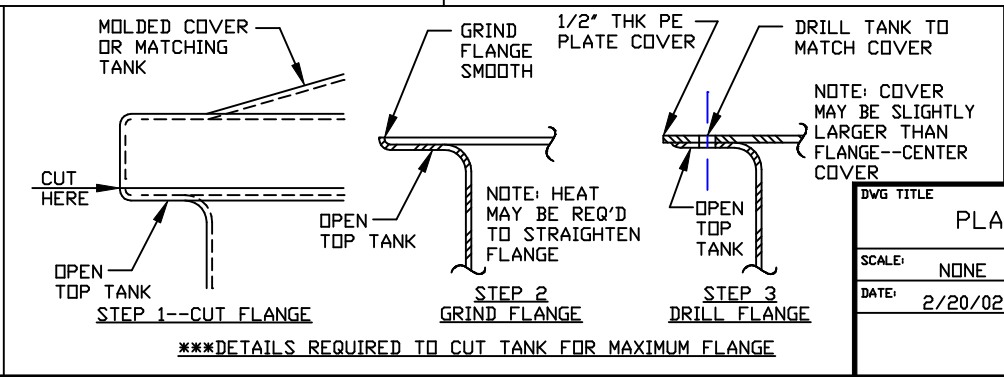
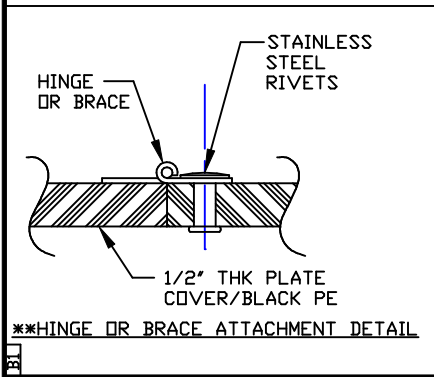
NOTE: CHART FOR REFERENCE ONLY. INDIVIDUAL TANK TO BE MEASURED BEFORE COVER IS CUT & DRILLED.

* BOLT TYPE: SS BOLTS ARE 1/2-13 BOLTS W/(2) WASHER, LOCK WASHER & 1/2-13 NUT/316SS
 PE BOLTS ARE 1/2-13 THUMB SCREWS--NO WASHERS OR NUTS AVAILABLE--TO BE USED ON TANKS W/INTERNAL FLANGES--TANK TO BE DRILLED AND TAPPED TO ACCEPT BOLTS

** BRACING: USE L 1 X 1 X 1/4"/SS FOR COVERS 64" DIA AND UNDER--USE FORMED CHANNEL 10 GA X 1 X 2"/SS FOR COVERS OVER 64"--ATTACH BRACING WITH STAINLESS STEEL RIVETS -- BREAK ALL SHARP CORNERS--SEE HINGE OR BRACE ATTACHMENT DETAIL

*** CUT TANK FOR MAXIMUM FLANGE--SEE DETAILS REQUIRED TO CUT TANK FOR MAXIMUM FLANGE

NOTE: GASKETING AVAILABLE UPON REQUEST. CONSULT FACTORY FOR PRICING & MATERIALS AVAILABLE.



NOTES
 1. THIS IS A COMPUTER GENERATED DWG.
 DO NOT REVISE BY HAND.

DWG TITLE: PLATE COVERS FOR OPEN TOP TANKS

SCALE: NONE

DATE: 2/20/02

POLY PROCESSING Company

Central Region
 P.O. Box 426 (7150)
 8251 Old Springington Rd.
 Norcross, GA 30052
 (770) 242-7525
 FAX: (770) 242-6795

DR: M WILKERSON
 CK: J. BRANTLEY

SHEET: 1 OF 1
 COMPUTER FILE: OTPLATE
 REV: -