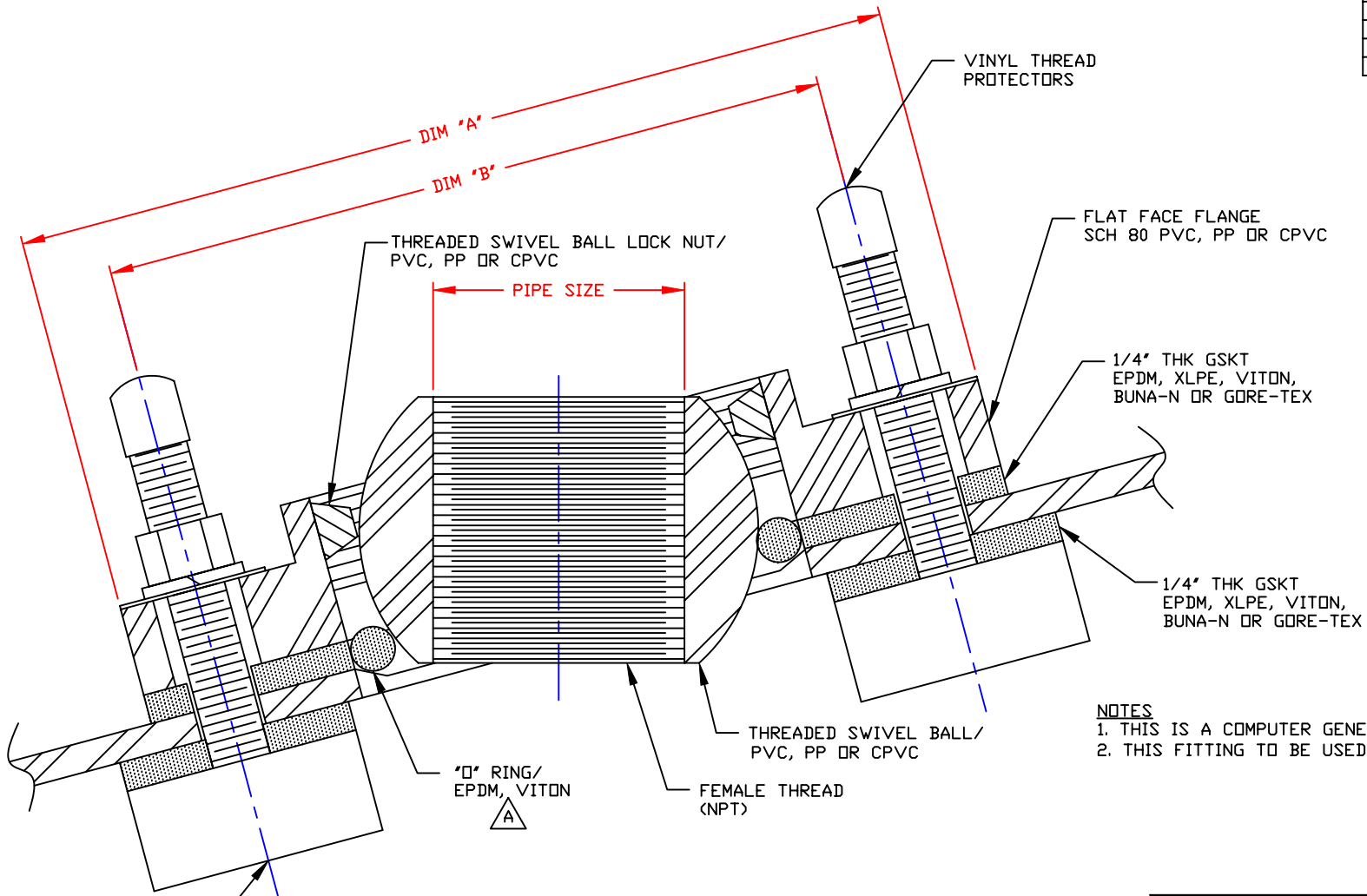


NON-CONTROLLED COPY
 INFORMATION SUBJECT TO CHANGE WITHOUT NOTICE
 VERIFY REV LEVEL OF PAPER COPY WITH REV LEVEL ON PPC WEB SITE

PIPE SIZE	DIMENSION "A"	DIMENSION "B"	NUMBER BOLTS
1 1/2"	7 1/2"	6"	4
2"	7 1/2"	6"	4
3"	9"	7 1/2"	8
4"	11"	9 1/2"	8



NOTES
 1. THIS IS A COMPUTER GENERATED DWG. DO NOT REVISE BY HAND.
 2. THIS FITTING TO BE USED ON TOP OF VERTICAL TANKS ONLY.

CONFIDENTIAL PROPERTY OF
 POLY PROCESSING COMPANY
 NOT FOR REPRINT OR USE
 WITHOUT PERMISSION

1/2-13 X 3 1/4" LG ALL THREAD STUD
 W/PE ENCAPSULATED HEAD (HEAD IS
 2" OD X 3/4" DEEP) W/FLAT WASHER,
 LOCK WASHER & 1/2-13 NUT/316SS,
 ALLOY C276, ALLOY 400, OR TITANIUM
 NO. OF BOLTS PER CHART

REV "A" REVISED "O" RING MATERIAL BY:JB 12/23/04 CK:MBW

DWG TITLE			
UNIVERSAL BALL DOME FITTING (FLANGE STYLE)			
SCALE:	FULL	 POLYPROCESSING COMPANY	DR: MB WILKERSON
DATE:	8/17/00		<small>Central Region P.O. Box 4150 (71211) 2205 East Sherington Rd. Monroe, LA 71203 (504) 343-7555 FAX (504) 343-8795</small>
		SHEET	COMPUTER FILE
		1 OF 1	UBDFS A